

WELCOME TO EAST HUNSBURY PRIMARY SCHOOL

September 2026 Reception Intake



Be Kind.

Work Hard.

Believe.

Dear Parent / Guardian

Firstly, welcome to the brilliant school that is East Hunsbury Primary School (EHPS) and thank you for visiting today to consider this school as **"the one"** for your child.

East Hunsbury Primary School is a family-focussed, kind and inclusive school who always puts the children at the centre. We are a two-form entry mainstream primary but we also have a fabulous 50-place Specialist Unit, called The Hive, for children with severe learning disabilities.



Kathryn Pennington, Headteacher

As a school, we are surrounded by the most wonderful children and expert practitioners. We fully appreciate what a big decision choosing your child's school is, as we know that they only get 'one chance' at a primary education.

That is why everyone here at EHPS is fully committed to ensuring that your child experiences success and always feels valued, cared for and that they belong. Here at East Hunsbury School, we want children to be children. We want them to laugh, grow and learn together. We celebrate diversity and every member of staff wants the best for your child.

Our mission is simple - we want children to leave us:

- knowing their future choices and opportunities
- prepared for the next stage of their educational journey and
- equipped with the skills to be able to contribute to making a better world.



WELCOME TO EAST HUNSBURY PRIMARY

We teach the children our school rules of being:

- Ready
- Respectful
- Safe

And everything we do is underpinned by our school values which are:

- Be Kind
- Work Hard
- Believe

It is these values and rules which we feel will help children navigate school-life and eventually, wider society.

Whilst we have the highest of expectations for our pupils, and academic and sporting achievement is very important to us, we also believe that laughter and kindness are essential because when children are happy and feel safe, learning is easier. We are very proud to be the Nation's Kindest School. We have an exceptional, aspirational and enabling curriculum which is complemented by our fantastic pastoral and nurture provision. We achieve very high academic standards and brilliance really is our minimum standard.



Finally, if you have any questions at all, no matter how big or small, please do not hesitate to contact the school office, or email me at: penningtonk@easthunsburyprimary.org as I would be more than happy to help you.

I really do hope that I can welcome you and your child to East Hunsbury Primary School in September 2026.

OUR CURRICULUM

Our Curriculum in a nutshell

At East Hunsbury Primary School, we are proud of our aspirational, enabling and inclusive curriculum. Here is some information about how we teach our subjects:

We teach:

- **phonics** and **spelling** through a programme called Sounds-Write
- **writing** using an approach called Talk for Writing (our Headteacher is even a Talk for Writing Consultant and we are a Talk for Writing Showcase School because of our excellence in teaching writing)
- **comprehension** using an approach called Talk for Reading
- **mathematics** through an approach called Mastery Maths (our Assistant Headteacher is a Maths Mastery specialist)
- Our **wider curriculum** (science, art, geography, history, RE) using our Trust's collaboratively created planning but we ensure it is tailored to the needs of our children and our community.

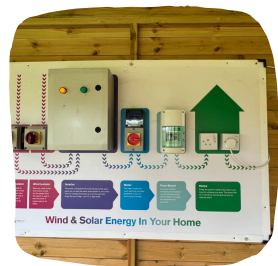


- We have developed our own **Science Outside the Classroom** curriculum which is focussed on bringing scientific learning alive in the outside environment. We also have our outside science classroom which is great fun to learn in!

- **Music** and **PE** are taught by specialists.
- We follow a brilliant programme called Language Angels to teach **French**.
- We have developed our own **PSHE+C (Personal, Social, Health, Emotion and Citizenship)** curriculum which meets the needs of our children and helps them to understand themselves and the world in which they live.

And so much more...

We do not set or stream for our lessons. Instead, we believe in high-challenge and strong support for **all**.



WHAT ELSE DO CHILDREN DO AT EHPS?

What else?

- Children go on a residential in Year 3 and in Year 6.
- All children will get the opportunity to learn a musical instrument as part of our First Access Music Project led by the Northamptonshire Music and Performing Arts Trust.
- In Year 4, children visit the Tate Gallery in London and take part in the Take One Picture project.
- We are partnered with The Saints and other external clubs/associations.
- We hold Walk in Wednesday every half-term where families are invited in to share a book or take part in an activity with their child at the start of the day.
- We run lots of afterschool clubs.
- In Year 5, children work with the Royal Shakespeare Company and perform at the Royal and Derngate
- We have many roles and responsibilities that the children can undertake such as: Reading Ambassadors, Digital Leaders, Heads of House, Kindness Ambassadors, Parliamentarians and much more.
- We have a well-stocked library which lies at the heart of our school and is run by a passionate and knowledgeable librarian.
- Our school has extremely high expectations surrounding behaviour.
- We have a fantastic nurture provision.
- We have an Ofsted graded Outstanding wrap around care provision called: Kids Club.
- We have fun and smile a lot!
- We are brilliant!



Friends of East Hunsbury Primary School - FEHPS

At East Hunsbury Primary School we have a very active and supportive FEHPS group, who run fantastic events and raise lots of money for our school. If you are interested in joining our FEHPS please email fehps@hotmail.co.uk and a member of the team will be more than happy to help.

MORE THAN JUST A SCHOOL...

Beyond the curriculum

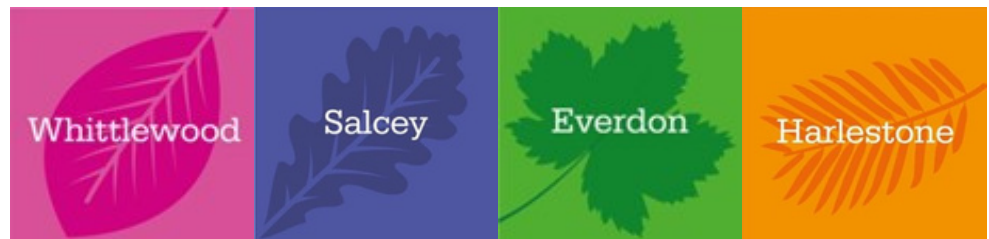
We are more than just a school. Developing the whole child is our priority which is why we do more than just teach the national curriculum. For example:

House System

We have a brilliant House system!

For us, the purpose of the Houses is to unite our school and allow the children to experience being a community within a community. Children from all year groups, across both the mainstream and The Hive, mix together and get to know each other through special events and wonderful opportunities. Every child and staff member is placed within one of our houses which are:

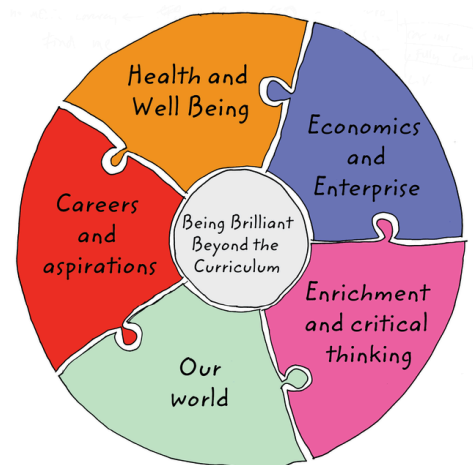
- Whittlewood
- Salcey
- Everdon
- Harlestone



They are named after woodlands in Northamptonshire and we chose woodlands to represent growing stronger together – have you visited any of them? Our houses are an integral part of our school life. Maybe one day your child might be a House Captain!

Personal Development Education Teams

You may have read this article <https://digital.magmgr.com/Preview/Index/2656830#page/1> which explains how we have 5 Education Teams based on the personal development of our children and their school community. They are run by experienced teachers and are focussed on:



1. **Economics and Enterprise** – this team teaches the children about financial literacy, money and entrepreneurial skills.

MORE THAN JUST A SCHOOL...

2. **Health and Wellbeing** – this team focusses on teaching and supporting the children's physical and mental health. They will learn about healthy choices and the impact on these for their future.
3. **Our World** – this team is focussed on developing the children's understanding of their role and place in the world. It explores the communities in which they live, provides opportunities to take part in local events whilst also looking at the role that they play as global citizens.
4. **Enrichment and Critical Thinking** – this team looks at providing the children with world class enrichment opportunities and experiences to truly develop critical thinking.
5. **Careers and Aspirations** – a team helping children see the opportunities that lie ahead of them as we want every child to believe in themselves and to know the choices they have for their future.

Again, these teams provide the most rich and wonderful enrichment opportunities for your child from: careers fairs/exhibitions to community events, a school shop and talks from banks and continuing our enterprise initiatives.

100 Reads

Reading is everything here at East Hunsbury Primary School and it sits at the heart of what we do. We have so many wonderful reading opportunities including RED (Read Every Day) October which is filled with brilliant events, visitors and bookish challenges, to a library filled with quality literature run by an expert librarian. However, we also have our 100 reads which we are very proud of. They are 100 books specially selected by our teaching staff. They are books we feel every child should experience during their childhood – wonderful enriching books that will bring something unique to their lives. We have a special poster which was even designed by a member of our teaching staff.

If you have toured our school, did you notice that these books are on the doors of our classrooms?

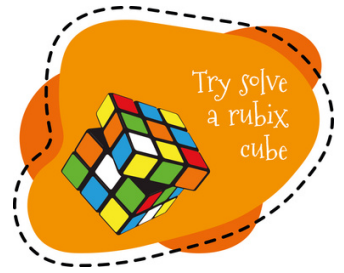
Children who read all 100 books, get a very special prize presented in an award assembly.

I wonder how many of the books you have read? Our poster can be found later in this booklet.

MORE THAN JUST A SCHOOL...

70 Things To Do

We are really proud of this initiative. As a school, we have carefully chosen 70 things that we believe every child should do during their childhood. They are 70 fun and enriching things e.g. roll down a hill, make a sandcastle and try to solve a rubix club. The idea behind this was influenced by the Rights of the Child which have been agreed by nearly every country in the world and in particular the right:



- that a child's education should help them develop their personality and
- to rest, play and take part in cultural and artistic activities.

This initiative was also inspired by the National Trust's 50 things to Do before your 11 ^¾ <https://www.nationaltrust.org.uk/visit/50-things> and it is also a partnership between home and school.

When starting school with us, every child receives a booklet allowing them to tick off the things as they complete them. The reason we have 70 things is that we have broken them down into 10 'things' per year group and have woven them into our curriculum. We have done this so that we can make sure every child has the opportunity to complete the 70 Things, even if they don't, or can't, at home.



KEY INFORMATION

Our School Day

In our mainstream classes, gates open at 8:30am and registration is at 8.45am. All children must be in school and ready to learn by 8.45am. Teachers set morning work for the children as they arrive. Classes finish at 3:20pm for EYFS/KS1 and 3:30pm for KS2.

The Hive's gates open at 8.40am, registration is at 8.55am and school finishes at 3.30pm.

We will always make sure you know the start and end times for your child before they join with us.



Before and After School Club (Wrap Around Care)

We know that having high-quality before and after school care is very important to many of our families. As such, we are aligned with an outstanding, on-site, wrap-around care provider.

More information on 'Kids Club' can be found on our website.

easthunsburyprimary.org.uk/index.php/forparents/ehps-kids-club

We also have a few childminders who collect and drop off at East Hunsbury. Please contact the school office for further information about this.

Home-school partnership – Keeping you informed

Together we are better! It is vital that as a school we do everything to ensure a close home-school partnership. We strive to keep you informed about your child's progress through our multiple lines of communication. We want to be a window into your child's life at school. At EHPS, we will always talk to you if we need to discuss anything and we hope that you will always talk to us if you have any concerns or questions. Our door is always open.



Full-time / Part-time Start

When your child starts with us, they will do so full-time. Any child who requires a part-time start will have that opportunity too. We are always led by the needs of the individual child.

SCHOOL UNIFORM

We want our children at East Hunsbury to look and feel smart, so uniform is important to us.

We have a main school uniform and a PE kit. There are lots of options to make sure that uniform is affordable for all of our families.

We also sell pre-loved uniform via the Friends of East Hunsbury Primary School.

Main School uniform	PE Kit
Grey trousers, skirt or pinafore OR checked skirt/pinafore	Plain black jogging bottoms (logo or non-logo) or plain black leggings (non-logo)
Green or white polo shirt (logo or non-logo) Reception to Y5 only	Plain black shorts (non-logo) or black and white shorts with logo
Green E.H.P.S logo sweatshirt, cardigan or logo fleece jacket or plain bottle green sweatshirt/cardigan	Plain black skort (non-logo) or black and white skort with logo
In the summer term and up to October half term: Grey knee length shorts or green-check summer dresses.	Plain black t-shirt (non-logo) or black and white t-shirt with logo
White shirt/blouse and checked tie – Y6 only (first one is provided by school. If it is mislaid, a replacement must be purchased from Jules@Home).	Plain black trainers or white trainers (no bright laces, logos or soles).
Flat-heeled black shoes that are polishable (not trainers or fashion shoe e.g. vans, Nike, canvas etc.). Sensible, plain black ankle boots are also allowed. Socks - grey, white, black or navy with checked skirt/pinafore. Tights - dark grey/bottle green or navy with checked skirt/pinafore	Plain black socks
Jewellery: a pair of small gold or silver studs / sensible, non-electronic watch which doesn't connect to the internet.	Plain black sweatshirt (non-logo) or black and white top with school logo or green E.H.P.S logo sweatshirt/cardigan or plain bottle green sweatshirt/cardigan
Plain hair bands, clips and bobbles are allowed in school colours (bottle green, yellow or black). Children are not permitted to wear brightly coloured or fashion hair accessories.	Jewellery: all jewellery must be removed prior to the school day.
Coats: The school encourages children to spend as much time outdoors as possible, even in inclement weather conditions. Therefore, coats that are suitable to the weather conditions are required. There are no restrictions as to type of coat worn, however it is strongly advised that they are waterproof in nature.	

EHPS 100 READS POSTER



BEFORE/AFTER SCHOOL CLUBS

EHPS clubs

EHPS staff run a number of clubs at lunchtime or after school. These are just a flavour of the clubs which have been run at different times during the year.

Cross Country Club	Yr 4, 5, 6
Uno Club	Yr 3 - 6
Code Club	KS2
Tag Rugby	Yr 3 and 4 Yr 5 and 6
Debate/Oracy Club	Yr 6
Art Club	Yr 4, 5, 6
Choir	Yr 4, 5, 6, Red & Yellow
Reading Ambassadors	Yr 5, 6
Poetry Club	Yr 3 - 6
Outdoor Explorers	Yr 1 - 6
The Hive	The Hive
Bucket Drumming Club	KS2
Musicianship Club	KS1
Yoga Club	Yr 2 - 4
Eco Warrior	KS2

BEFORE/AFTER SCHOOL/EXTERNAL CLUBS

Before/After school clubs

We also run a number of before and after school clubs through external providers.

Freestyle Performing Arts	Yr 1, 2, 3, 4, 5, 6	8.00am - 8.45am
Hotshots Basketball	Yr 3, 4	3.30pm - 4.15pm
Hotshots Basketball	Yr 5, 6	4.30pm - 5.15pm
Freestyle Gymnastics	Yr 1, 2, 3, 4, 5, 6	8.00am - 8.45am
Spanish	Yr 3, 4, 5, 6	8.00am - 8.45am
Spanish	Reception, Yr 1, 2	3.30pm - 4.00pm
Freestyle Football	Yr 3, 4, 5, 6	3.30pm - 5.00pm
Freestyle Football Skills	Yr 1, 2, 3, 4, 5, 6	8.00am - 8.45am
Freestyle Dodgeball	Yr 1, 2, 3, 4, 5, 6	3.30pm - 5.00pm
Freestyle Udance	Yr 1, 2, 3, 4, 5, 6	8.00am - 8.45am
Freestyle Sports Start	Reception, Yr 1, 2, 3, 4, 5, 6	3.30pm - 4.45pm
Cooking Club	Year 2 - 4	3:30pm - 4:30pm
iRock	All	1.15 - 3.30pm

MUSIC & PERFORMING ARTS

"Every child is an artist." Picasso

Here at EHPS we really value the performing arts. We want children to experience creativity and find their inner artist. As they journey through their primary school life with us, your child will have the opportunity to be taught by expert practitioners for music, dance and drama (including the Royal Shakespeare Company), perform on a stage, learn an instrument, work with an array of artists and visit a gallery.

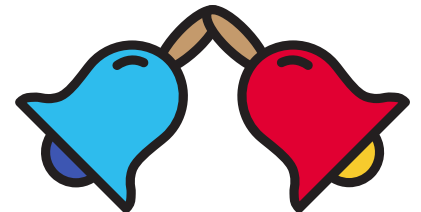
Music specialists come into school once a week to teach a variety of instruments in small groups or 1:1 such as keyboard, guitar, woodwind and strings

Children benefit from the "First Access" programme which enables the whole class or small groups to learn the same instrument together.



Children have a music lesson every week from a specialist where they learn songs or about different musical genres, depending on their age group.

We have a dedicated music room with lots of different musical instruments which the children have the opportunity to play during lessons.



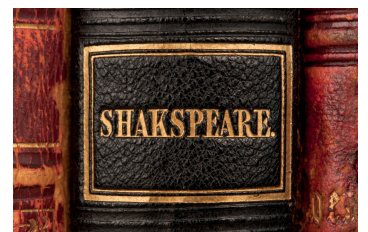
Children who learn an instrument have the opportunity to perform in our Summer Gala.

We run a choir who take part in events like the Big Sing and Young Voices.

We take part in the Northamptonshire Music & Performing Arts Festival.



Yr 5 work with the Royal Shakespeare Company on a performance which is filmed and performed in a local theatre.



Yr 6 produce a spectacular end of year performance with support from Limelight Theatre.



SEND AT EHPS

Children with SEND

We are an inclusive school; therefore we are committed to ensuring all children at EHPS thrive and this includes any child who may have additional needs. Having a Specialist Unit (The Hive) makes us experts in this field. We have a SENCo who is dedicated to ensuring the needs of every child are met and she works closely with medical professionals such as Occupational Therapists, Speech and Language practitioners and Physiotherapists. Every child is perfectly unique and our curriculums will always be tailored to meet their needs.



Here are just some of the things that we offer at East Hunsbury Primary School for children with SEND:

- Yoga
- Dance
- Forest School
- Music therapy
- Makaton
- Time with our Behaviour Support Lead, to support aspects of social and emotional development through a variety of different means, including; talking, sharing stories and specific intervention groups



This information is designed to give you a glimpse into the brilliant world of East Hunsbury Primary School – there is so much more to show you and tell you and we look forward to having the opportunity to do so.

Join the community and keep up to date by following us at www.facebook.com/EastHunsburyPrimarySchool



WHAT MAKES US BRILLIANT?

Library



Reading is at the heart of curriculum
Ofsted April 2022

Music



Sensory Room



Brand new All Weather Sports Pitch



EYFS area



Our outdoor science classroom



Forest School and outdoor learning opportunities



Staff in the specialist unit are expert practitioners
Ofsted April 2022

WHAT MAKES US BRILLIANT?

**Trim Trail
and Forestry
Area**



Brilliance Board



**70 things to do
before you leave
EHPS**



Leaders have
ensured the curriculum is
broad and ambitious

Ofsted April 2022



There is a strong
sense of community

Ofsted April 2022



Work Hard.
Be Kind.
Believe.

Our values

